

# Direct Imaging of the Cosmic Web in the Local Universe

A. Del Olmo, J. Sánchez Almeida, C. Muñoz Tuñón, B. Elmegreen, D. Elmegreen, J. Fliri, M. Filho



**Our plan:** Detect nearby cosmic web gas.

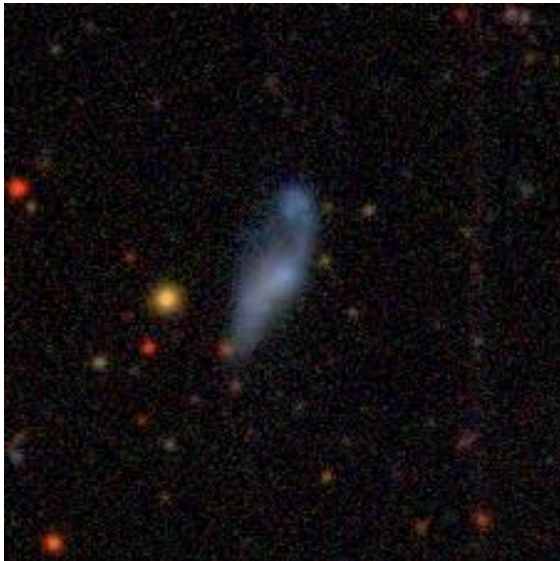
**Targets:** Extremely metal-poor galaxies and intergalactic medium around them.

**Why:** They show evidence of recent cold-flow accretion.

**How:** Deep H $\alpha$  imaging with the 10.4m GTC telescope with an observational technique to remove efficiently sky emission.

**Now:** Looking for unusual emission around XMP galaxies in the IAC Stripe 82 Legacy project to select the targets.

More information in the poster!



XMP galaxy J2340-00



GTC telescope at ORM, La Palma