



kindergarden quenching galaxies

Peppo Gavazzi
Universita' di
Milano- Bicocca

Spineto June 12, 2015

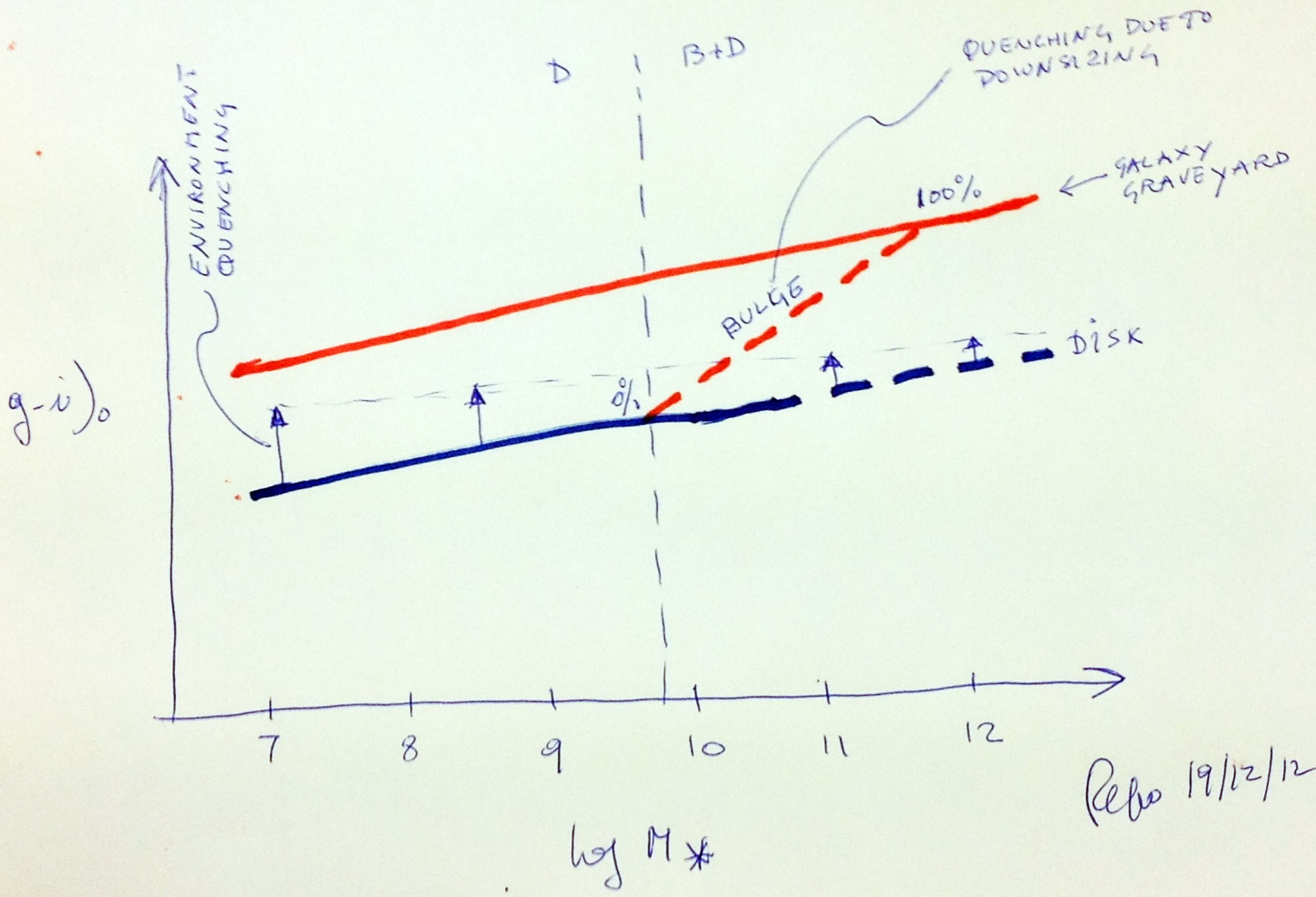


The role of bars in quenching star formation ($0 < z < 3$)

G. Gavazzi (MIB)
G. Consolandi "
M. Dotti "
R. Fanali "
M. Fossati (Mpe)
M. Fumagalli (Durham)
G. Savorngan (Swinburne)
A. Boselli (LAM)
L. Gutierrez (UNAM)
H. Toledo (UNAM)
R. Giovanelli (Cornell)
M. Haynes (Cornell)

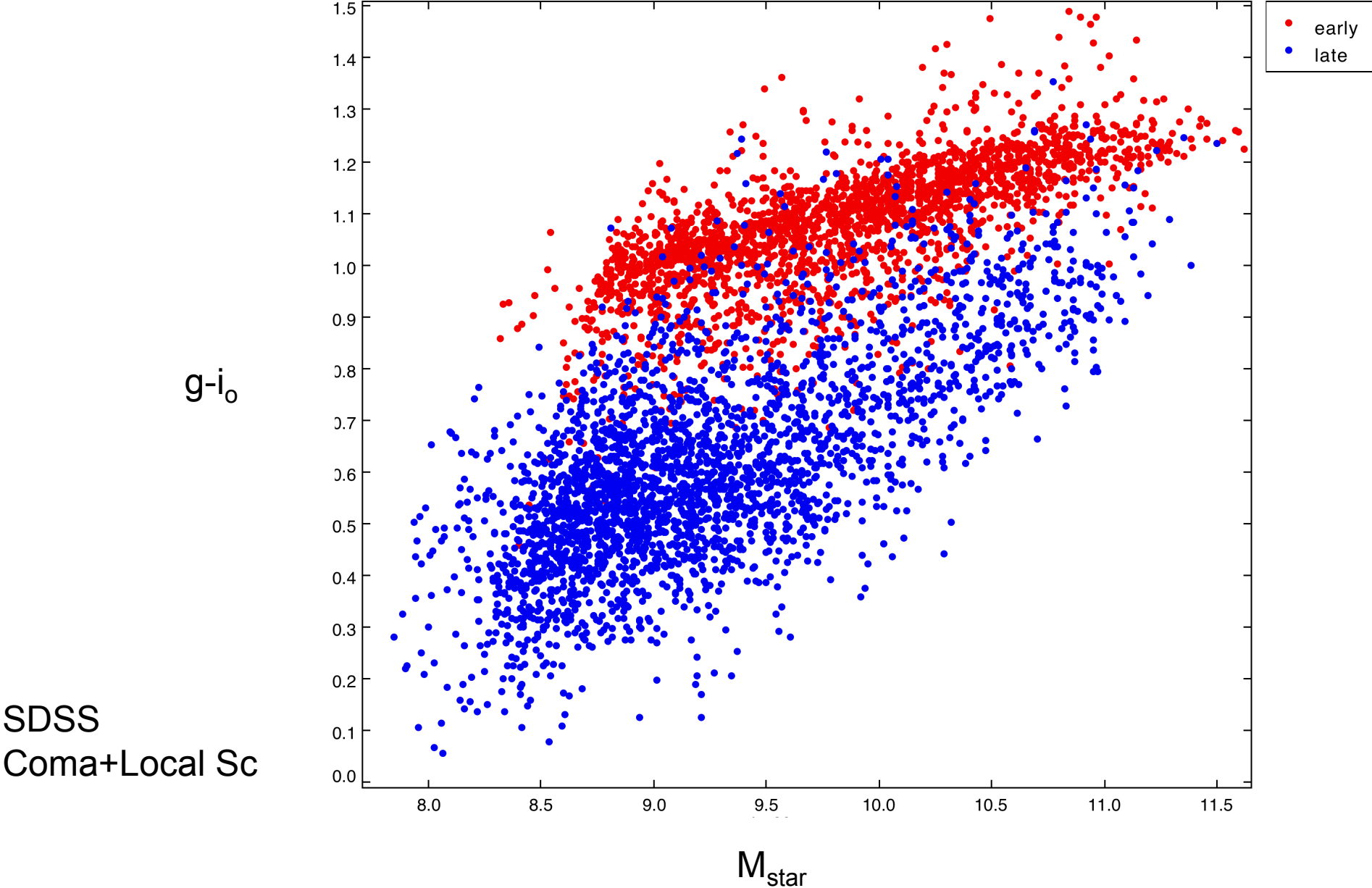
Gavazzi+15 (A&A 1/6/15)

Spineto June 12, 2015

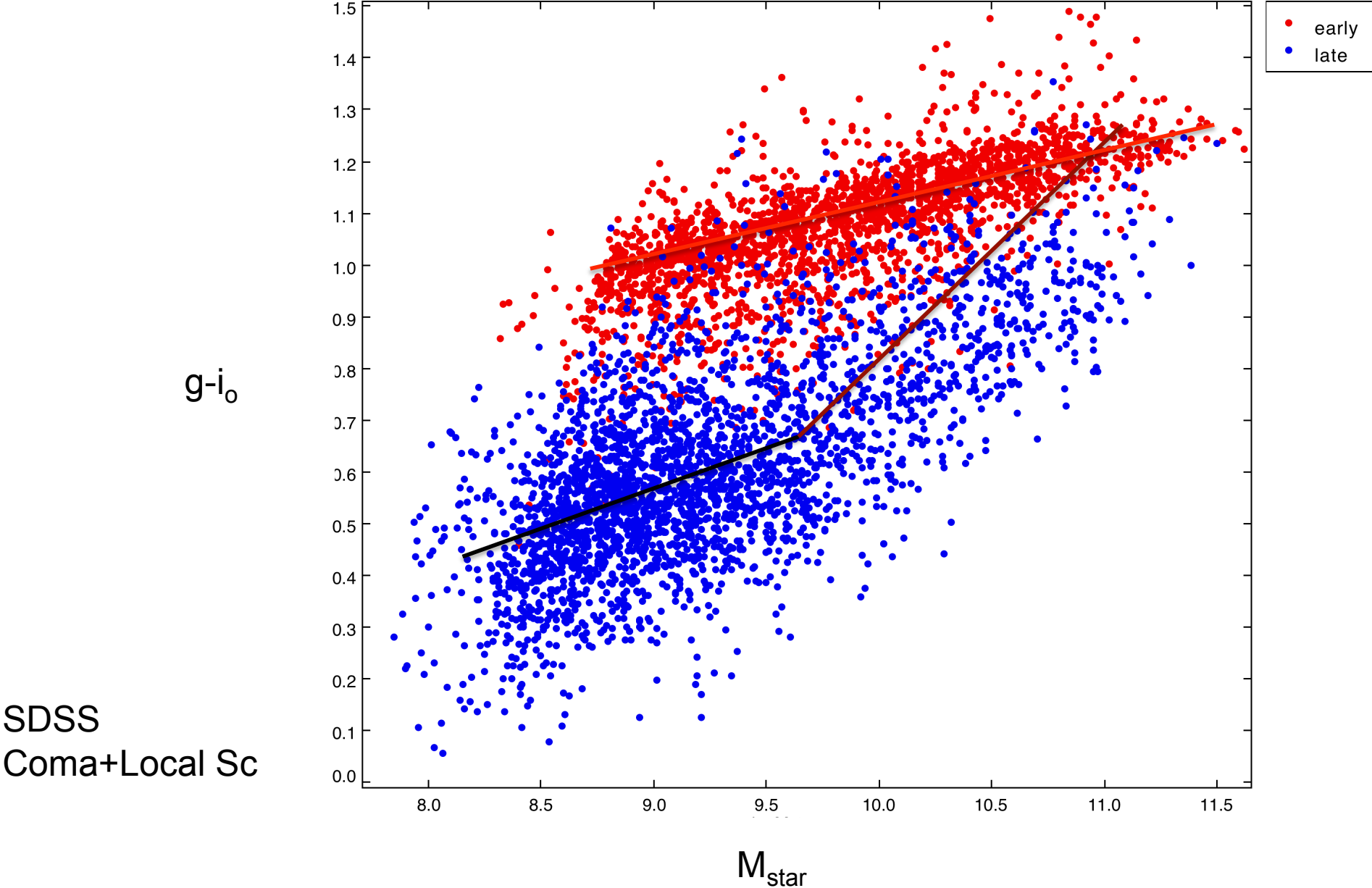


Rebo 19/12/12

The color/mass relation

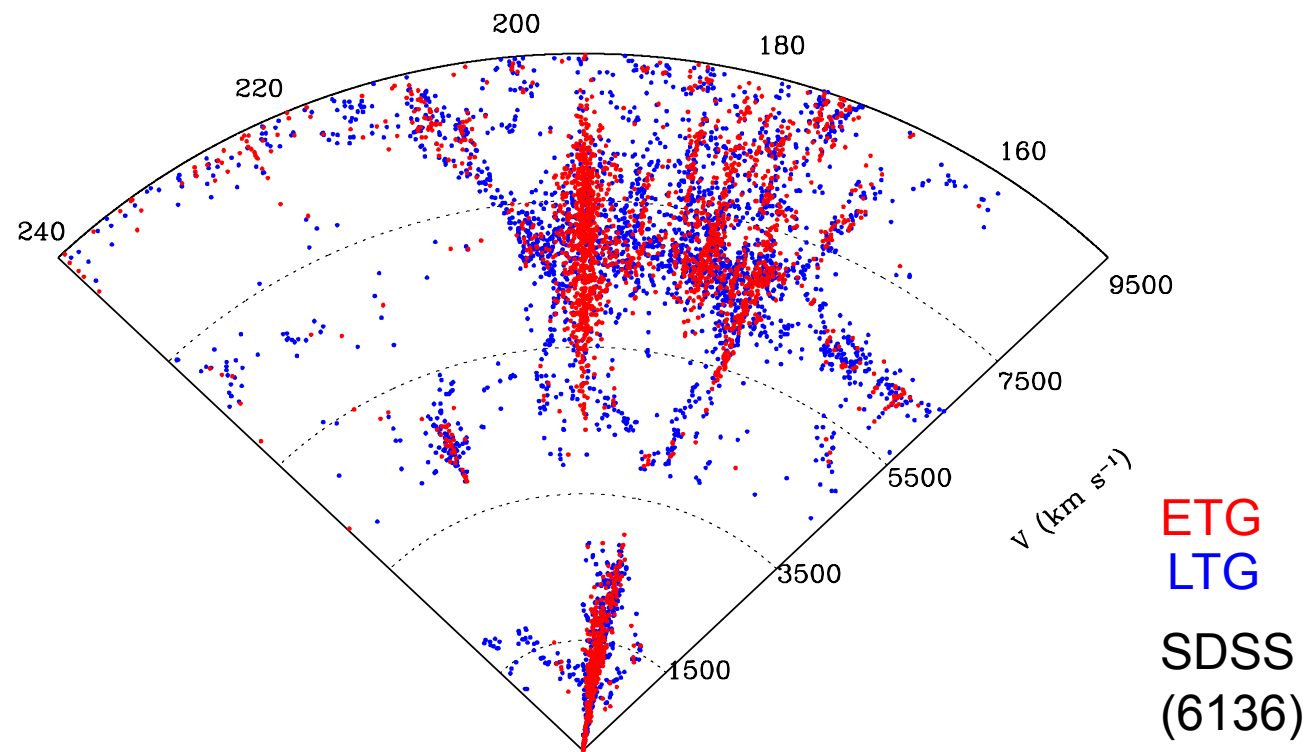
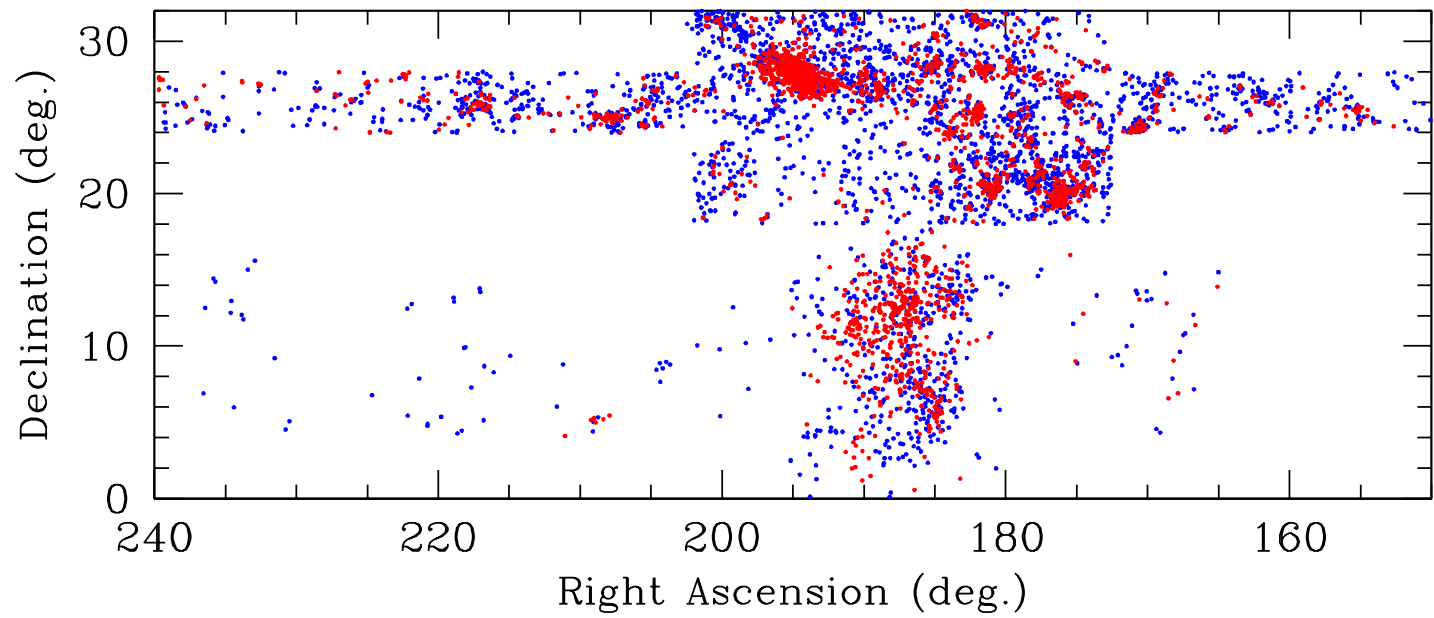


The color/mass relation



Coma Sc

Local Sc

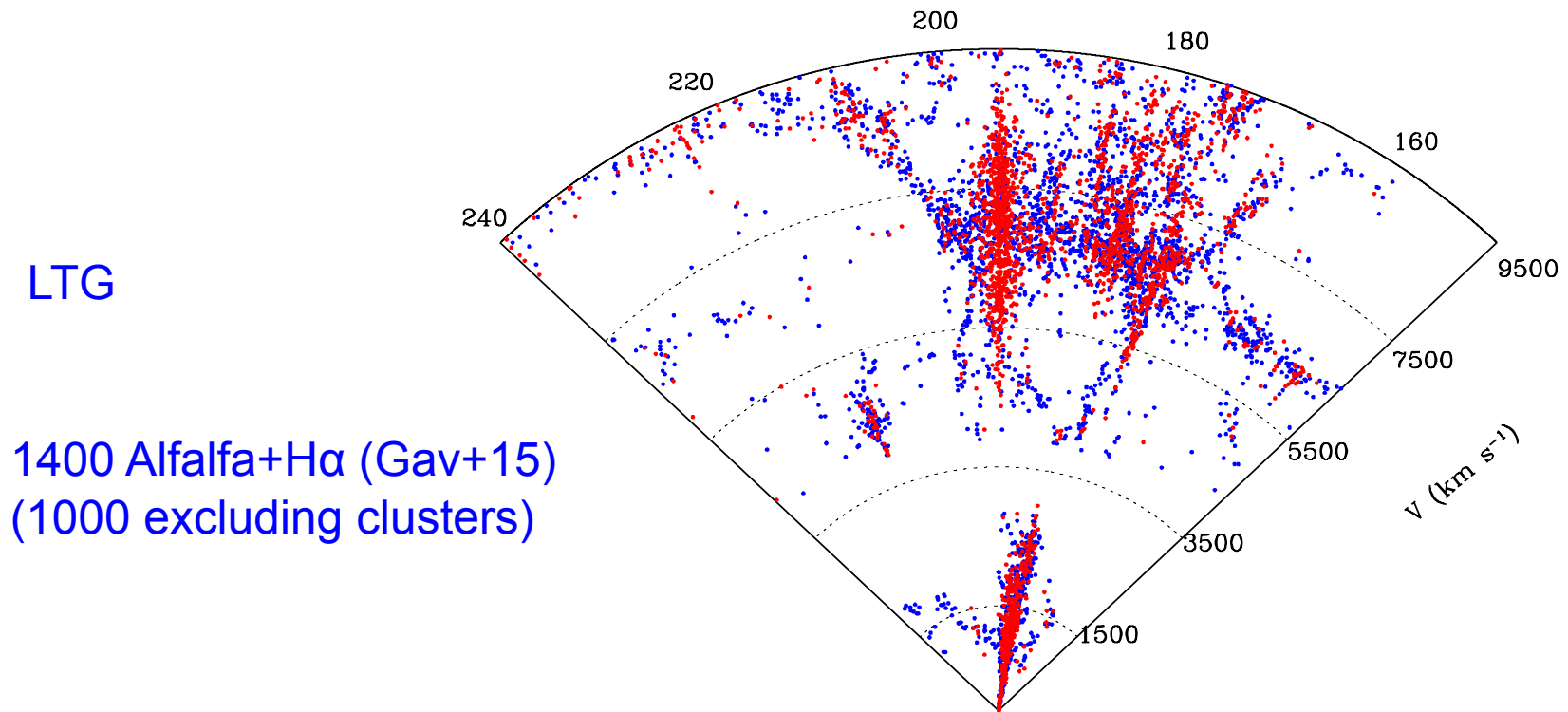
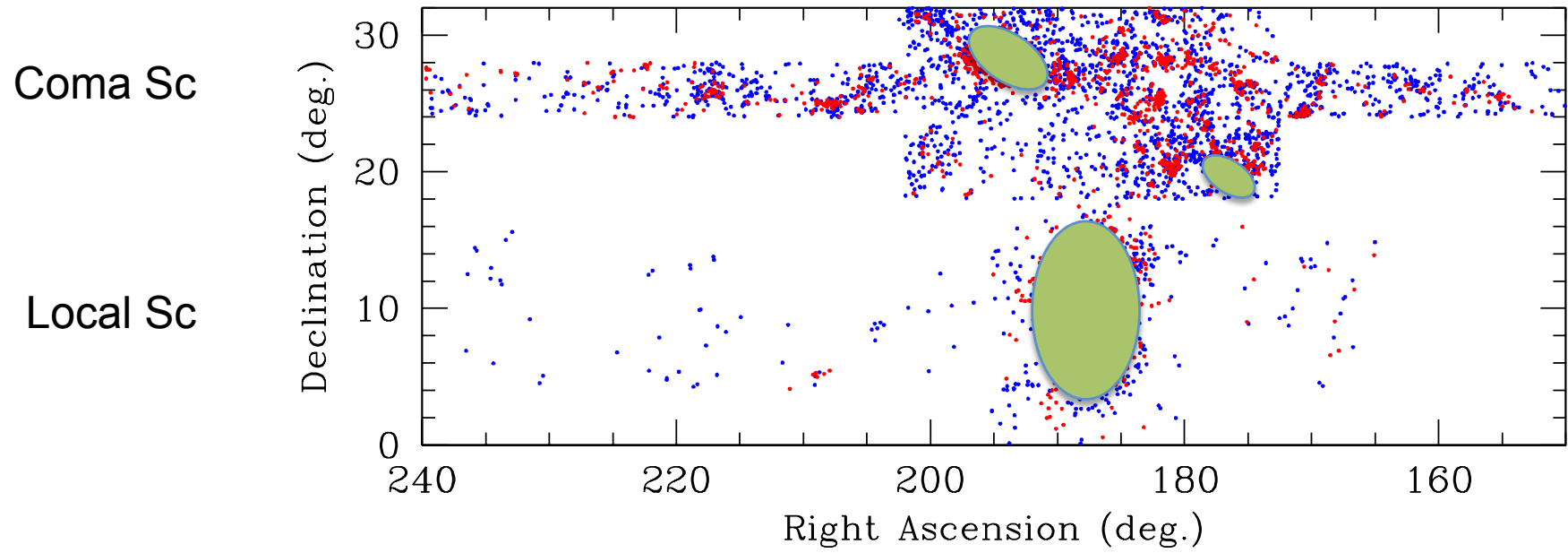




Arecibo-ALFALFA (2005 - 2012)
21 cm obs. (Haynes+11)



San Pedro Martir (Mx) (2006 - 2014) H α
narrow-band Imaging. (Gavazzi+15)



Gas-rich = Normal isolated star forming LTG galaxies

Coma Sc

Local Sc

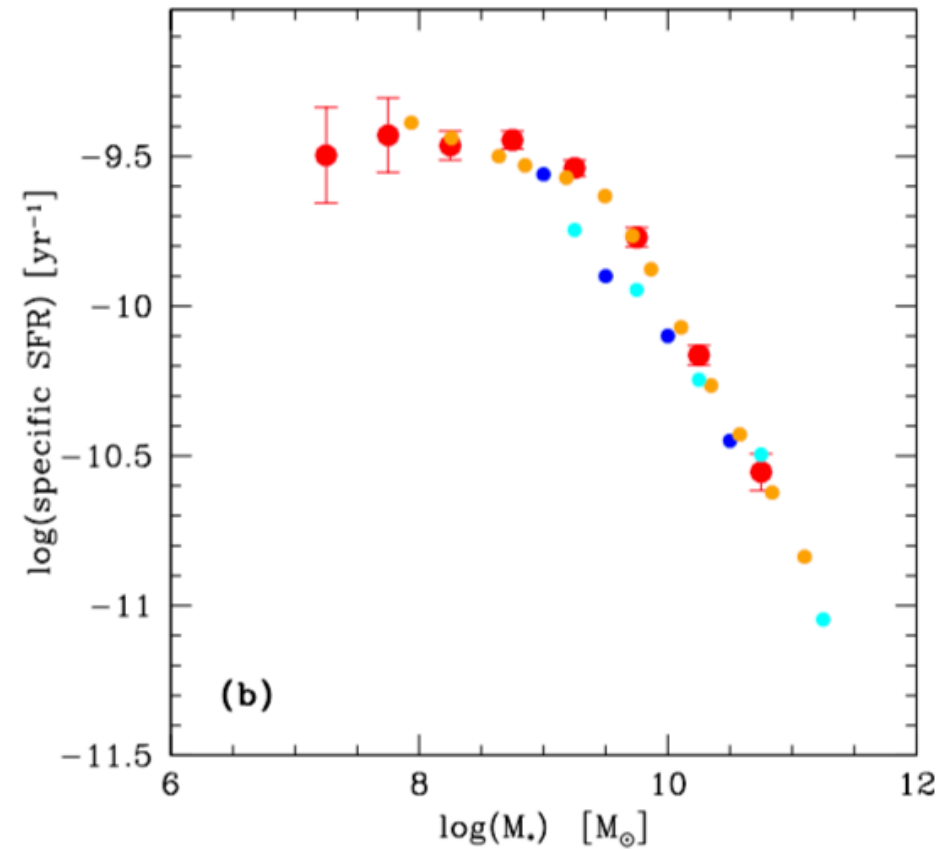
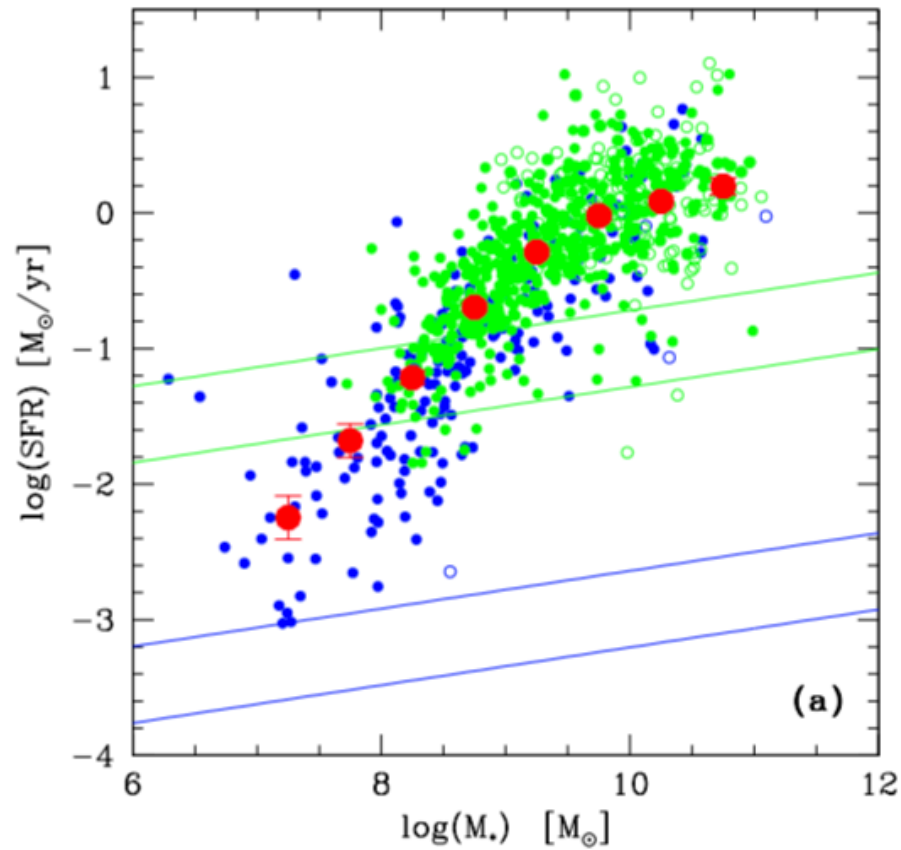
HI selected

Huang+12

Brinchmann+04

Bauer+13

T.W.

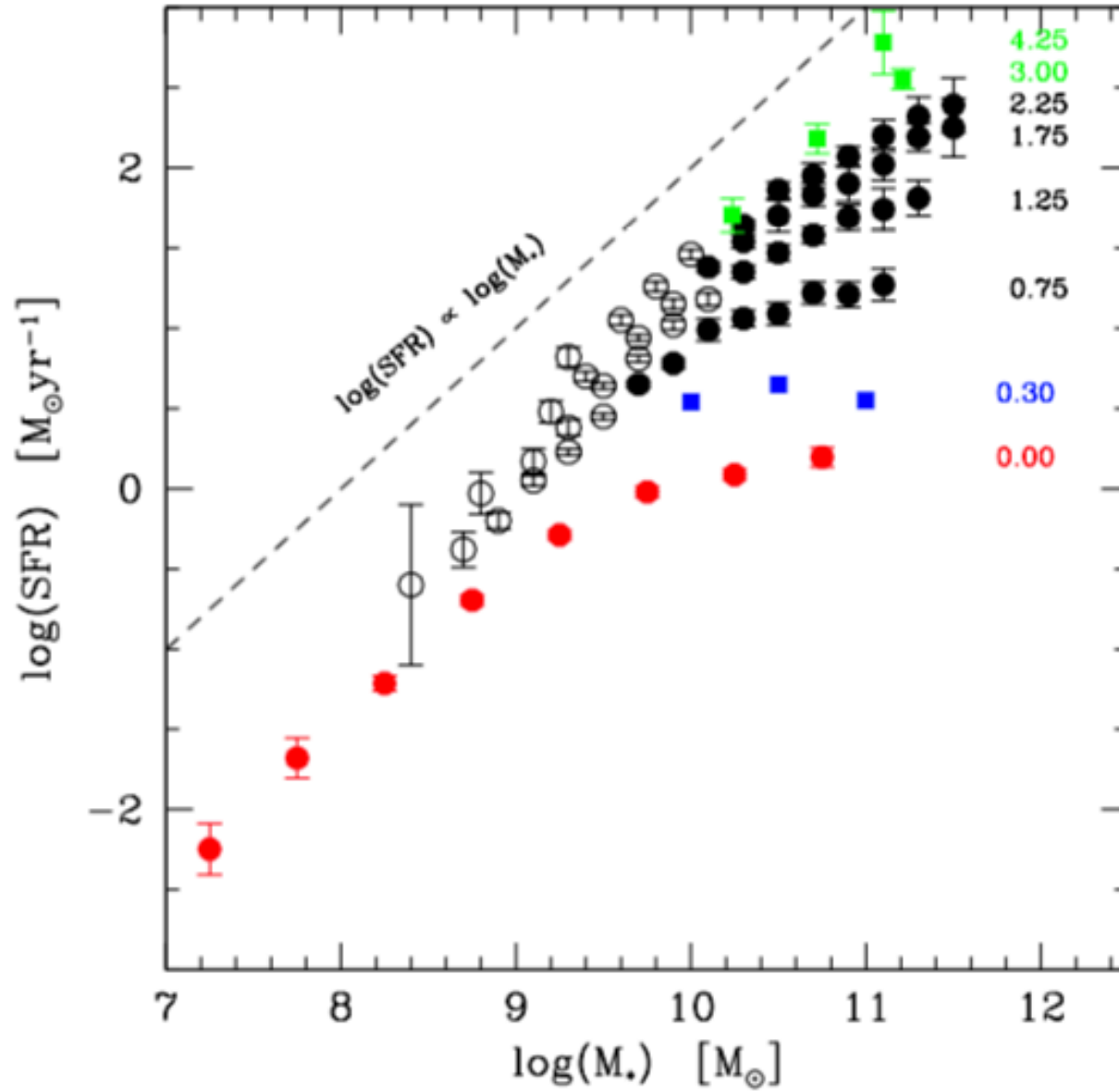


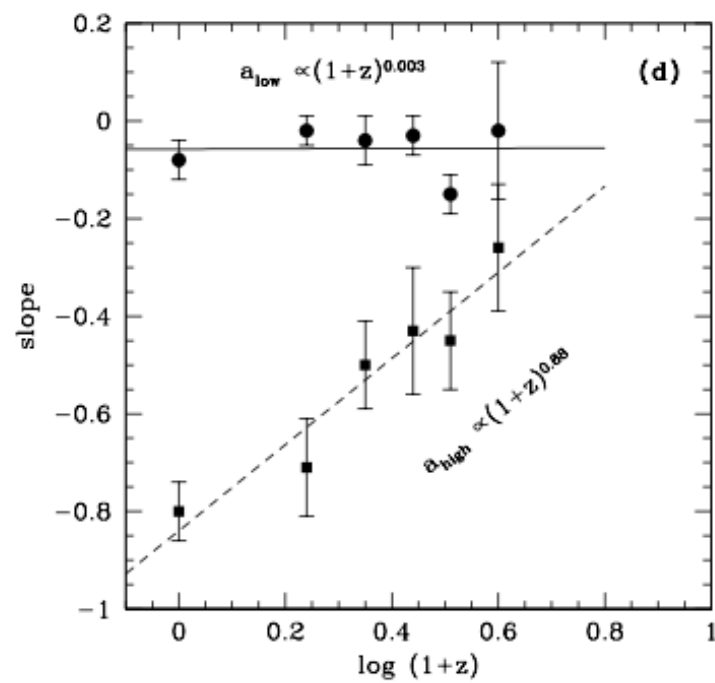
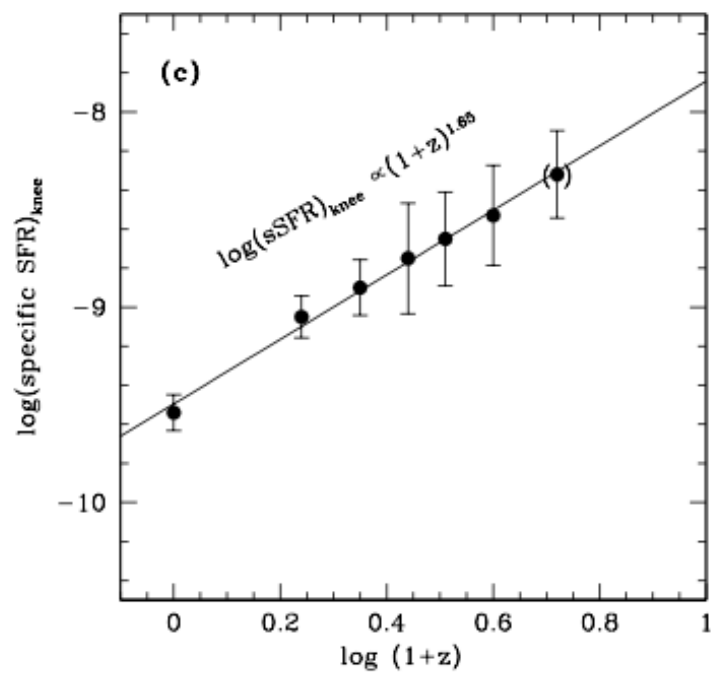
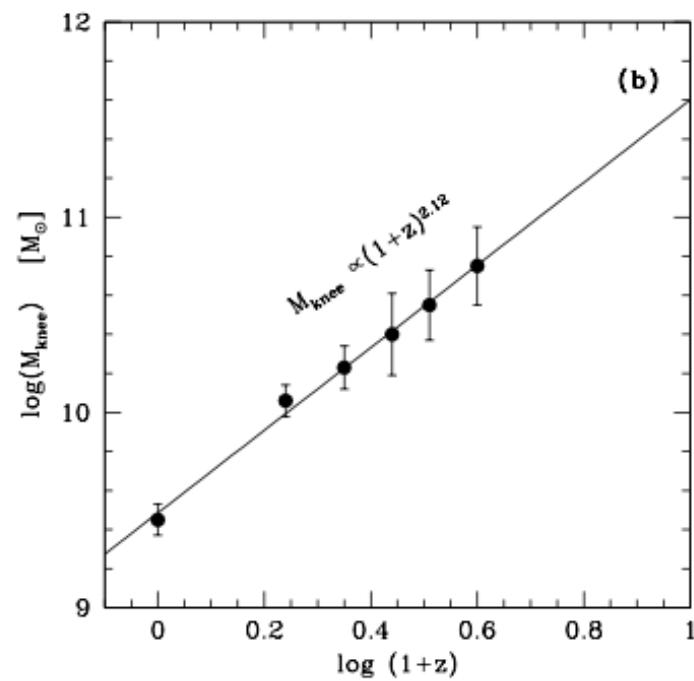
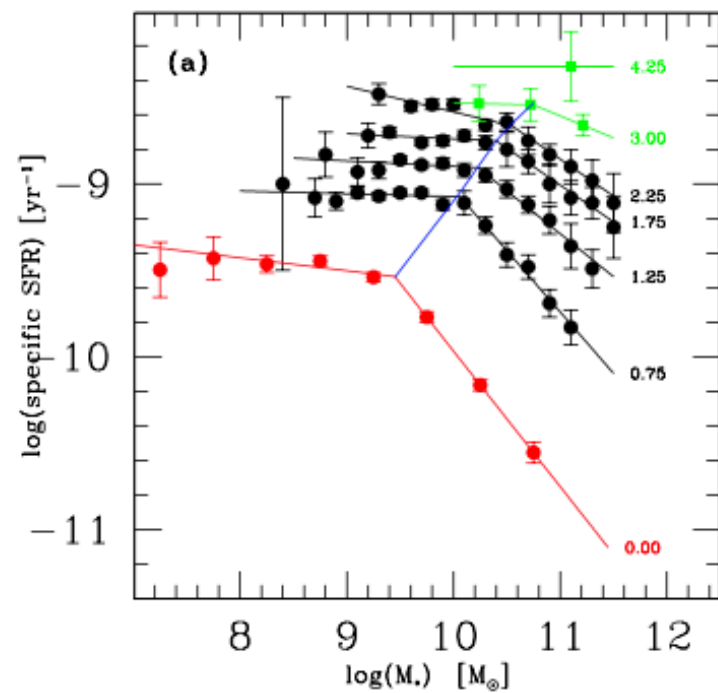
Median this w

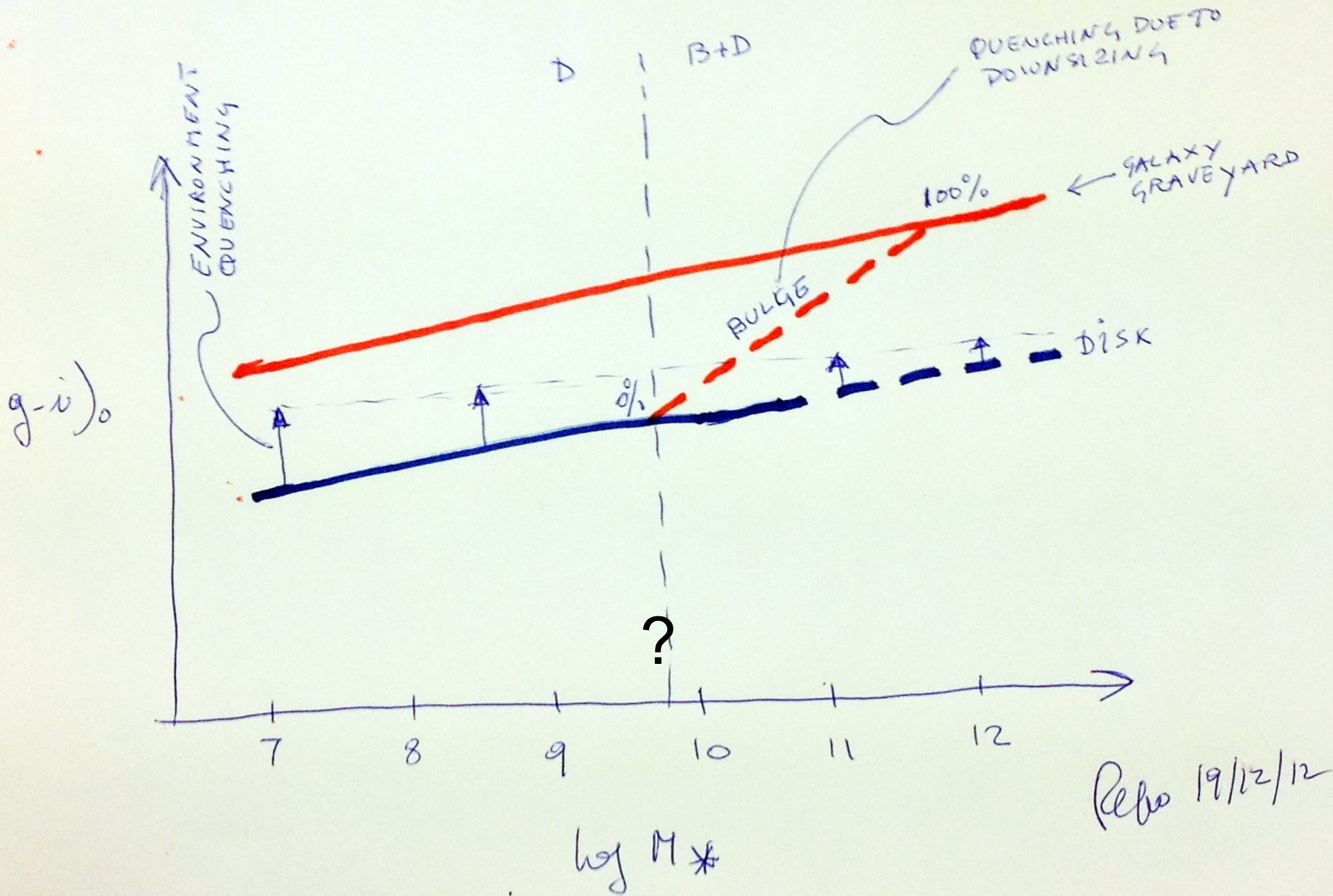
Bauer+13

Whitaker+14

Schreiber+15







Rebo 19/12/12



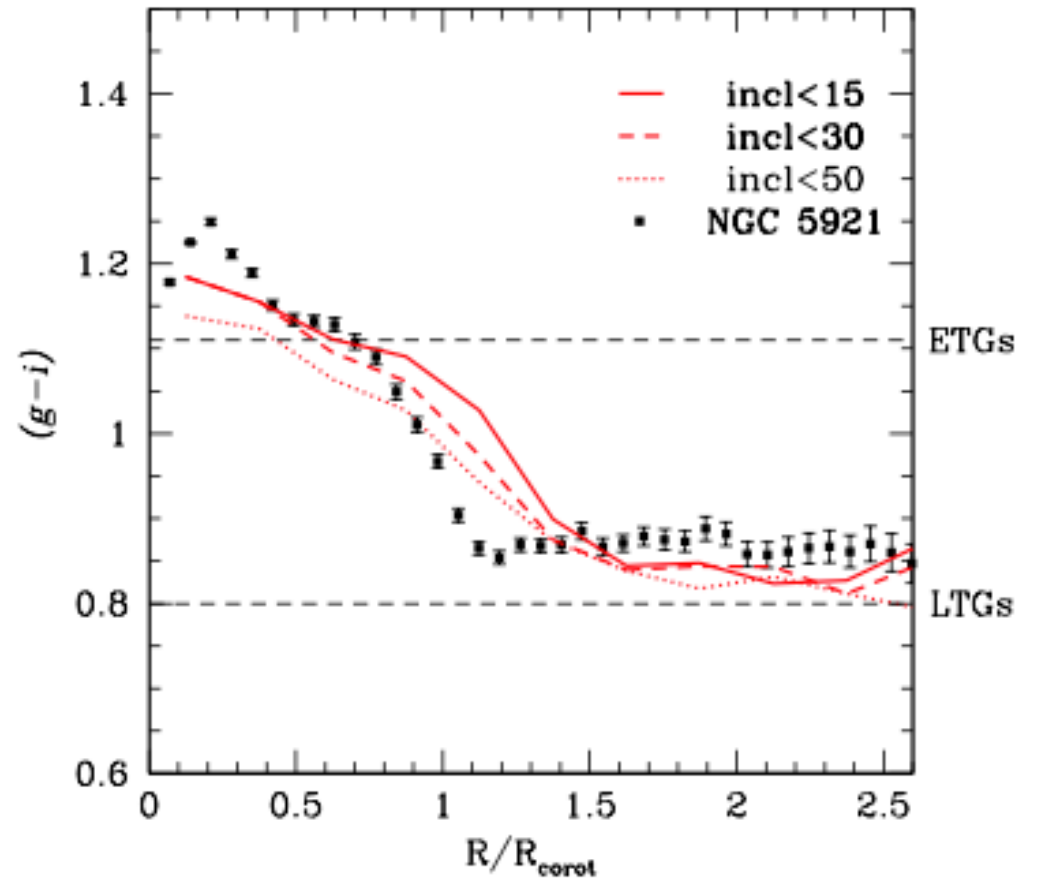
Mass →



Barred galaxies are red within corotation radius



NGC 5921



Obs colors

Sim stars

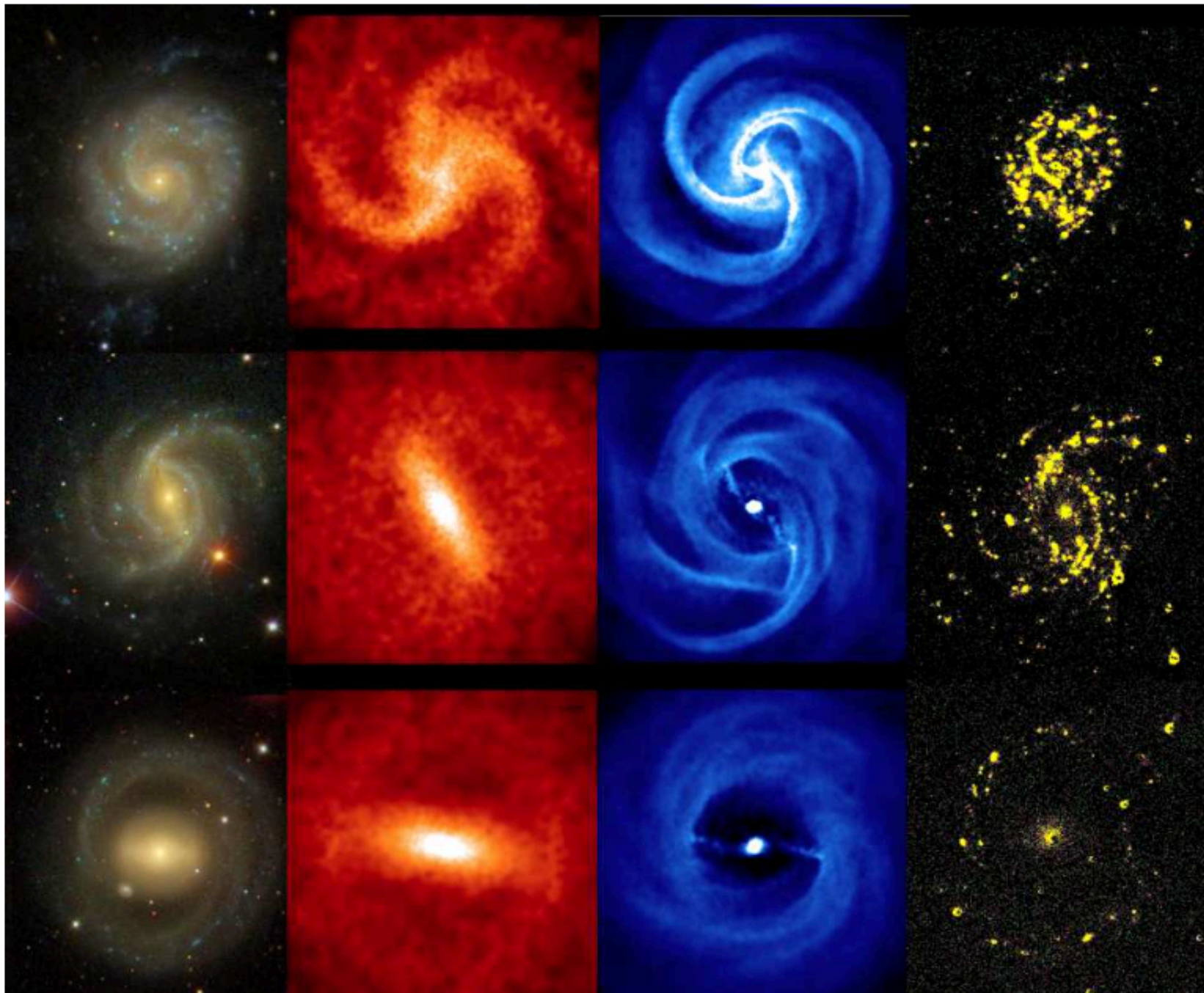
Sim gas

Obs gas

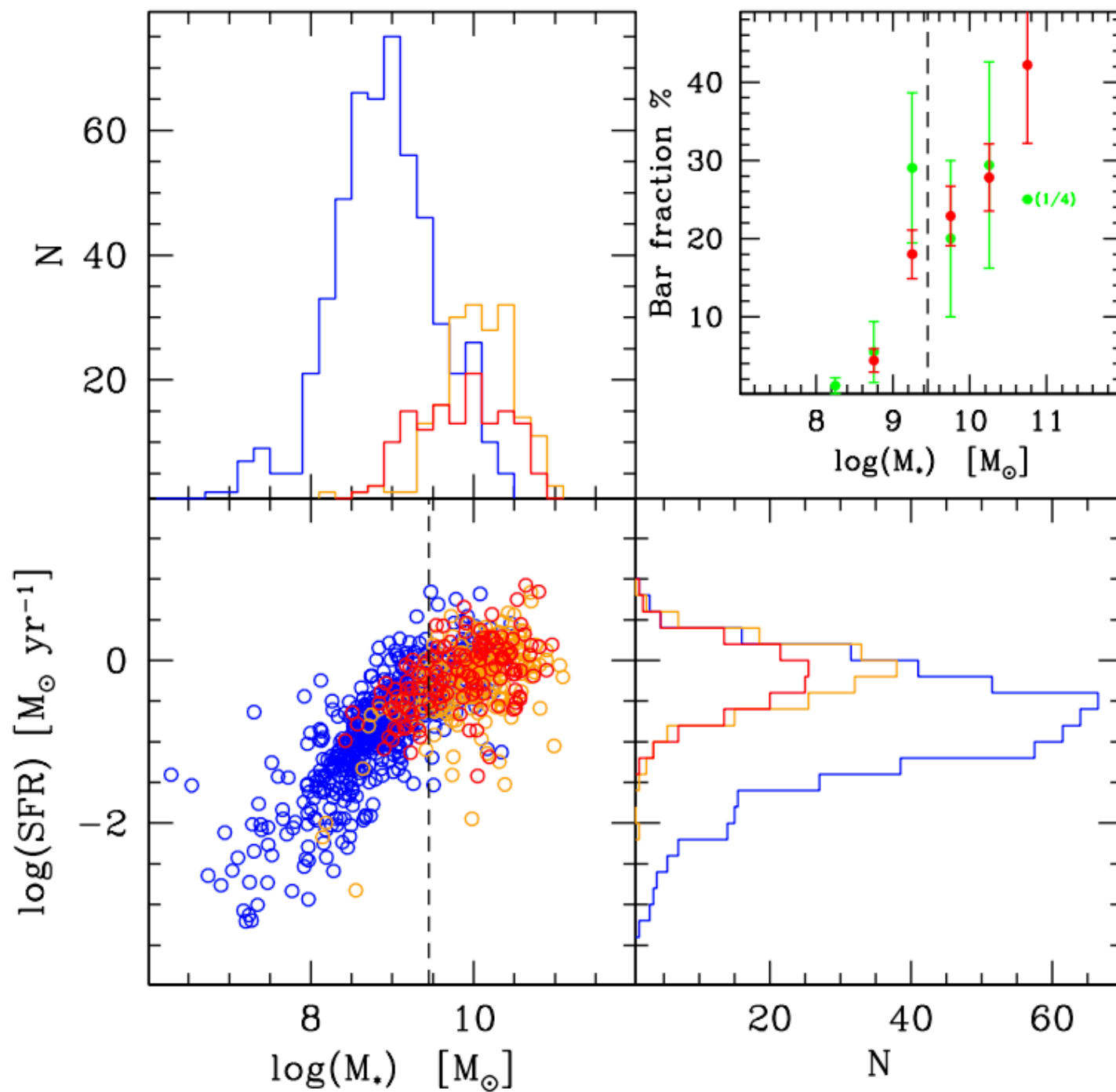
t_1

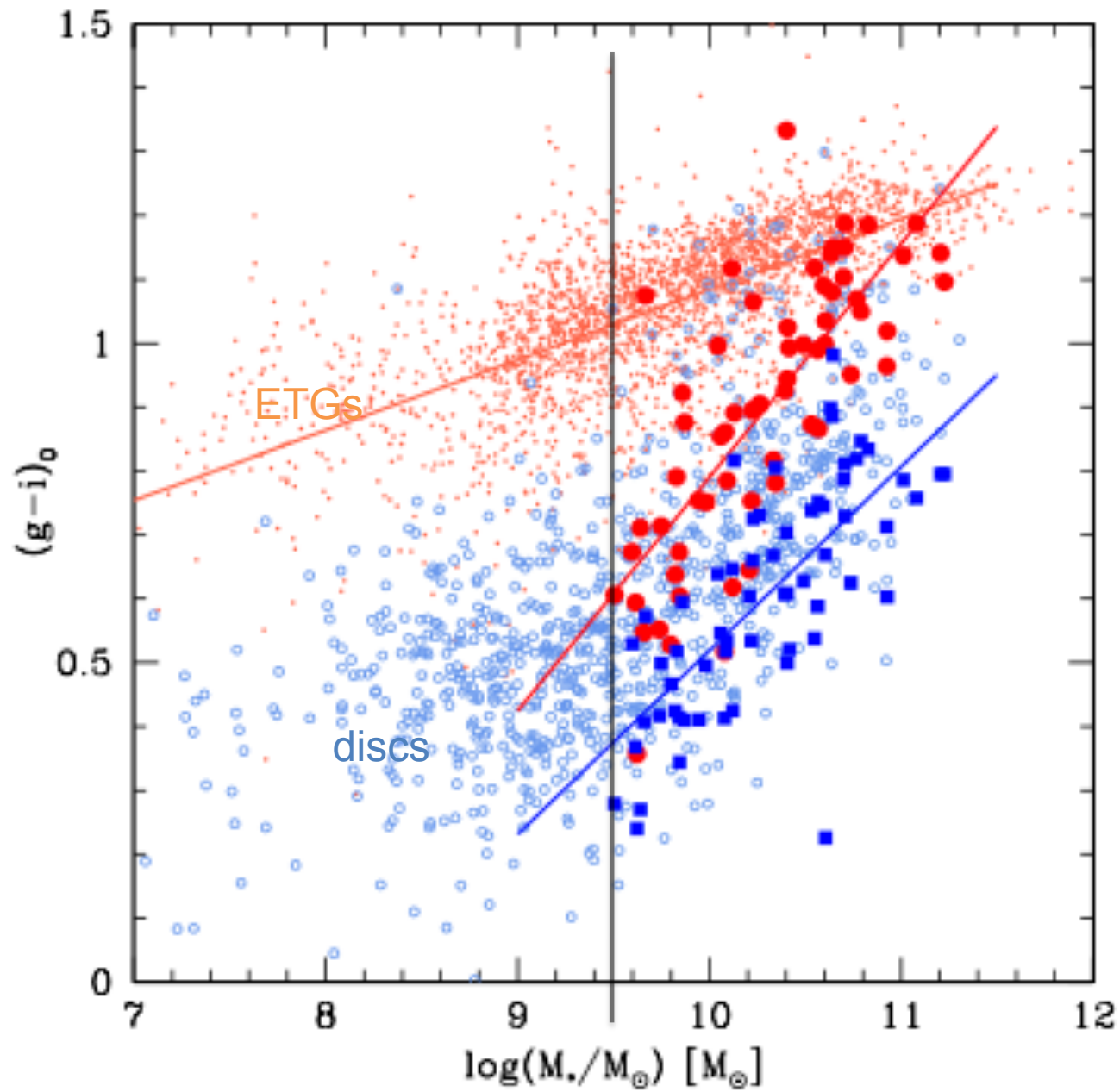
t_2

t_3



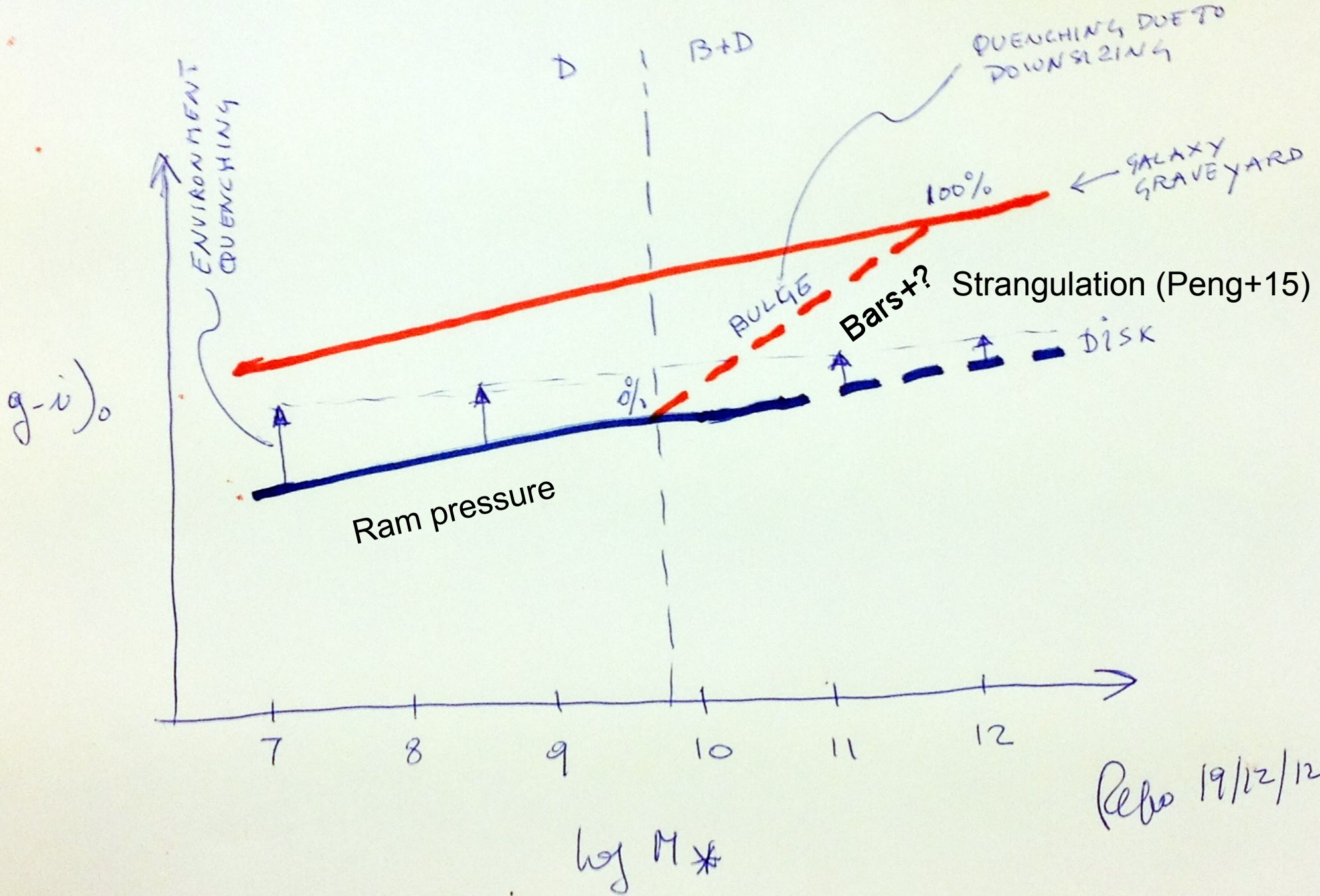
Disc
Bulge
BAR





Barred galaxies
inside corotation

Barred galaxies
outside corotation



Rebo 19/12/12



Thank you